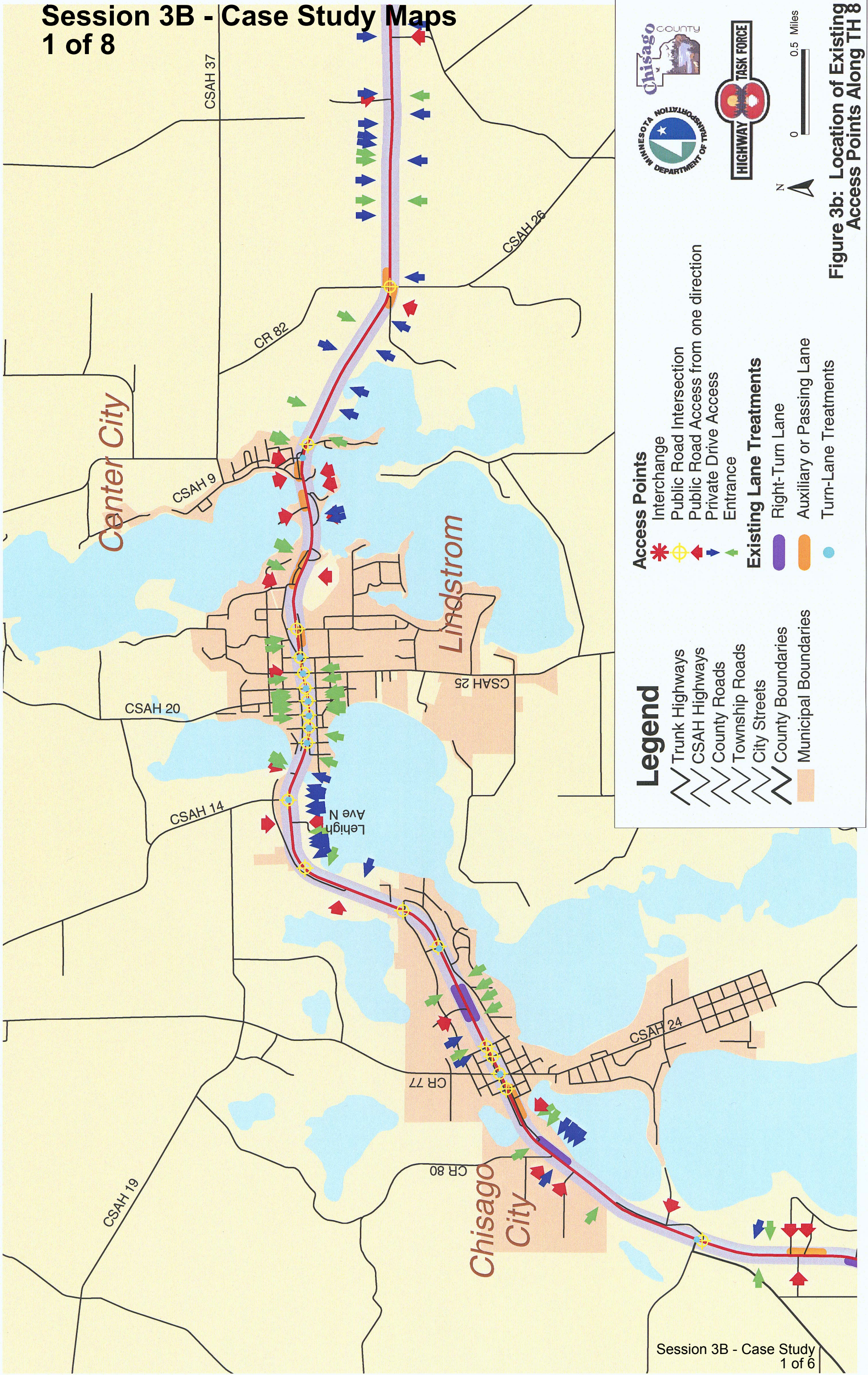


Session 3B - Case Study Maps

1 of 8



Legend

- Trunk Highways
- CSAH Highways
- County Roads
- Township Roads
- City Streets
- County Boundaries
- Municipal Boundaries

Access Points

- Interchange
- Public Road Intersection
- Public Road Access from one direction
- Private Drive Access
- Entrance

Existing Lane Treatments

- Right-Turn Lane
- Auxiliary or Passing Lane
- Turn-Lane Treatments

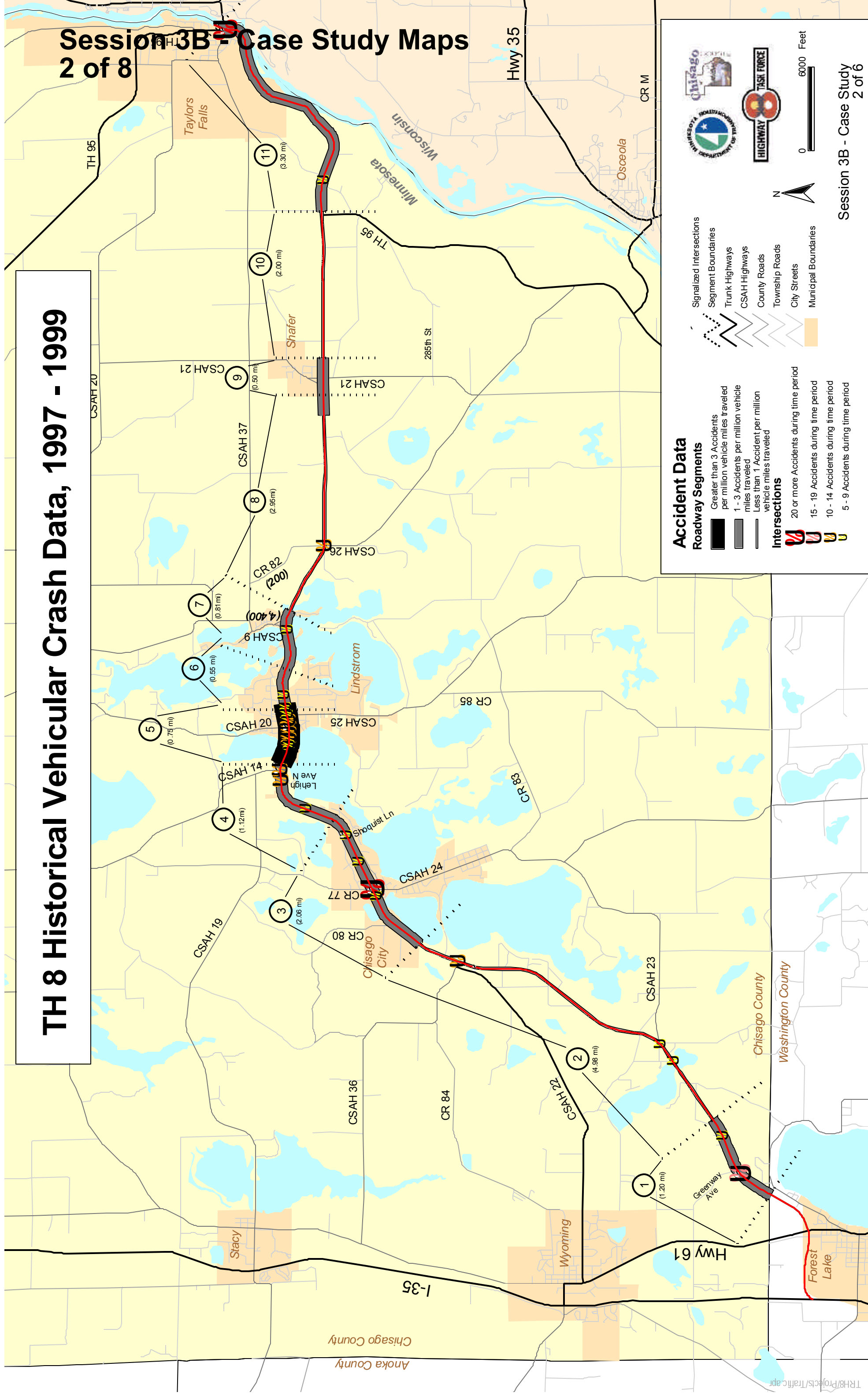
Chisago COUNTY
MINNESOTA DEPARTMENT OF TRANSPORTATION
HIGHWAY TASK FORCE

N
0 0.5 Miles

Figure 3b: Location of Existing Access Points Along TH 8

TH 8 Historical Vehicular Crash Data, 1997 - 1999

Session 3B - Case Study Maps 2 of 8



Accident Data

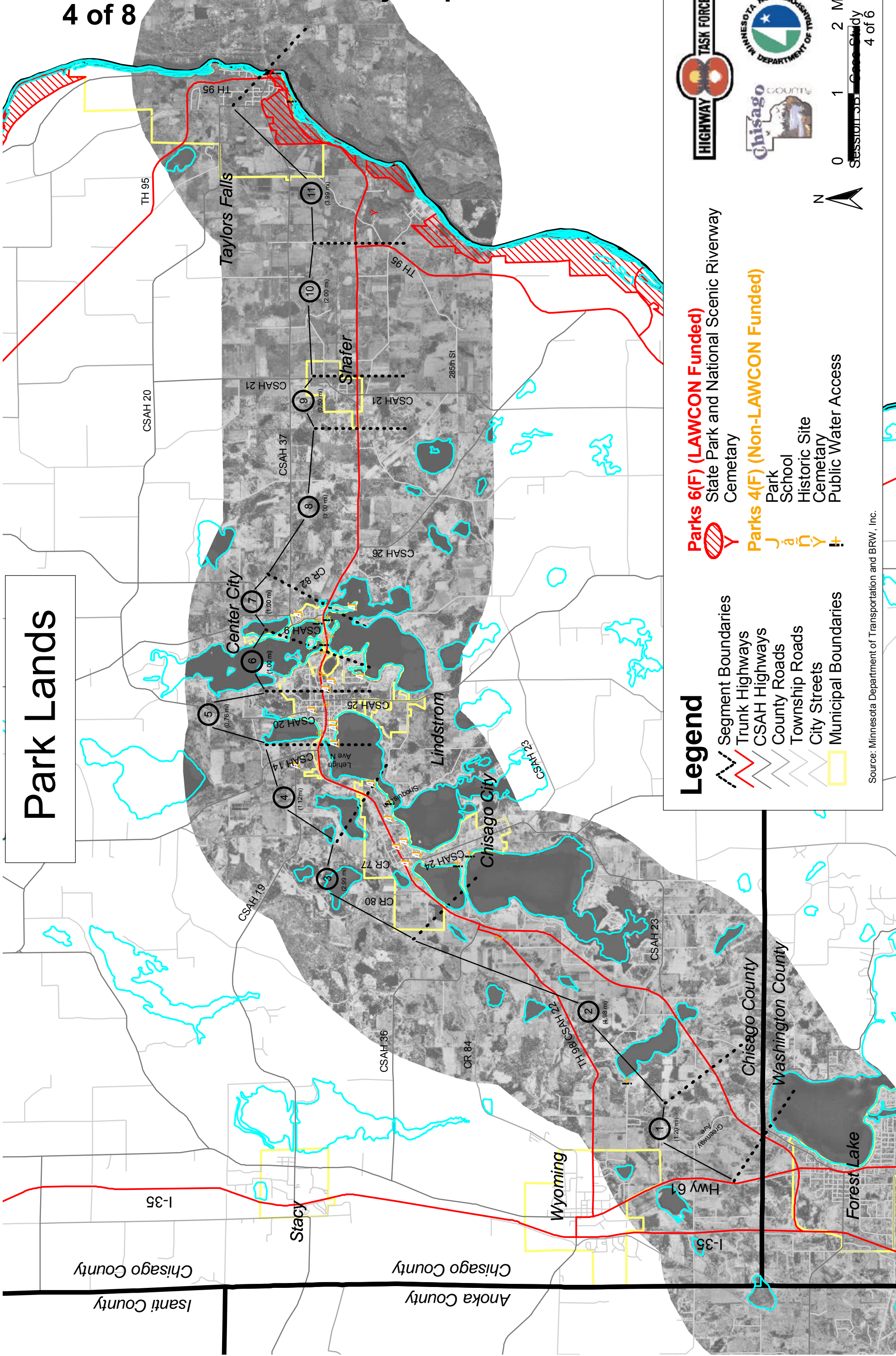
- Roadway Segments**
- Greater than 3 Accidents per million vehicle miles traveled
 - 1 - 3 Accidents per million vehicle miles traveled
 - Less than 1 Accident per million vehicle miles traveled
- Intersections**
- 20 or more Accidents during time period
 - 15 - 19 Accidents during time period
 - 10 - 14 Accidents during time period
 - 5 - 9 Accidents during time period

- Legend**
- Signalized Intersections
 - Segment Boundaries
 - Trunk Highways
 - CSAH Highways
 - County Roads
 - Township Roads
 - City Streets
 - Municipal Boundaries



Session 3B - Case Study Maps

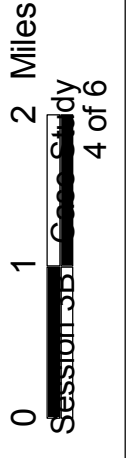
4 of 8



Park Lands

- Parks 6(F) (LAWCON Funded)**
 State Park and National Scenic Riverway
 Cemetery
- Parks 4(F) (Non-LAWCON Funded)**
 Park
 School
 Historic Site
 Cemetery
 Public Water Access

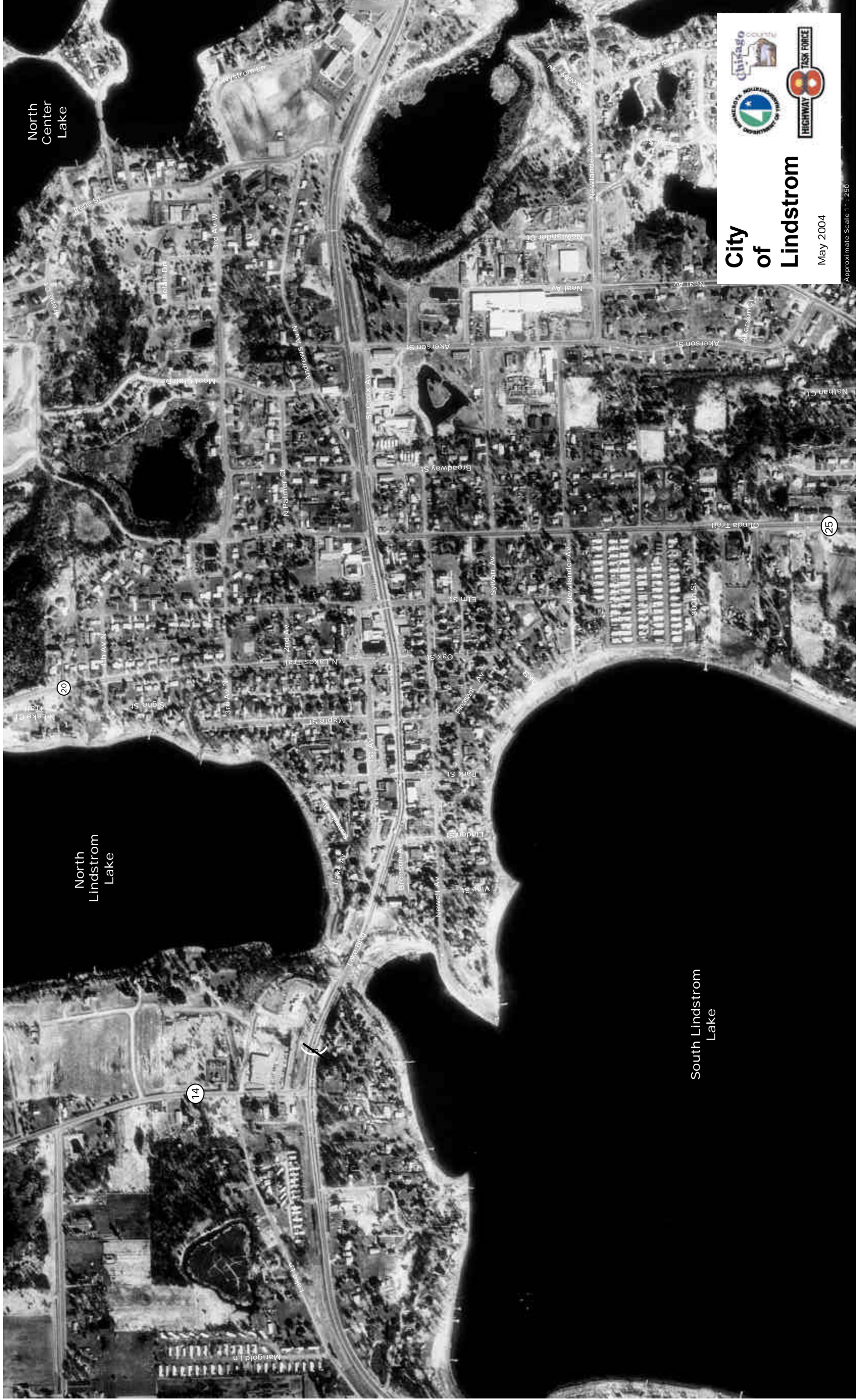
- Legend**
- Segment Boundaries
 - Trunk Highways
 - CSAH Highways
 - County Roads
 - Township Roads
 - City Streets
 - Municipal Boundaries



Source: Minnesota Department of Transportation and BRW, Inc.

Session 3B - Case Study Maps

6 of 8

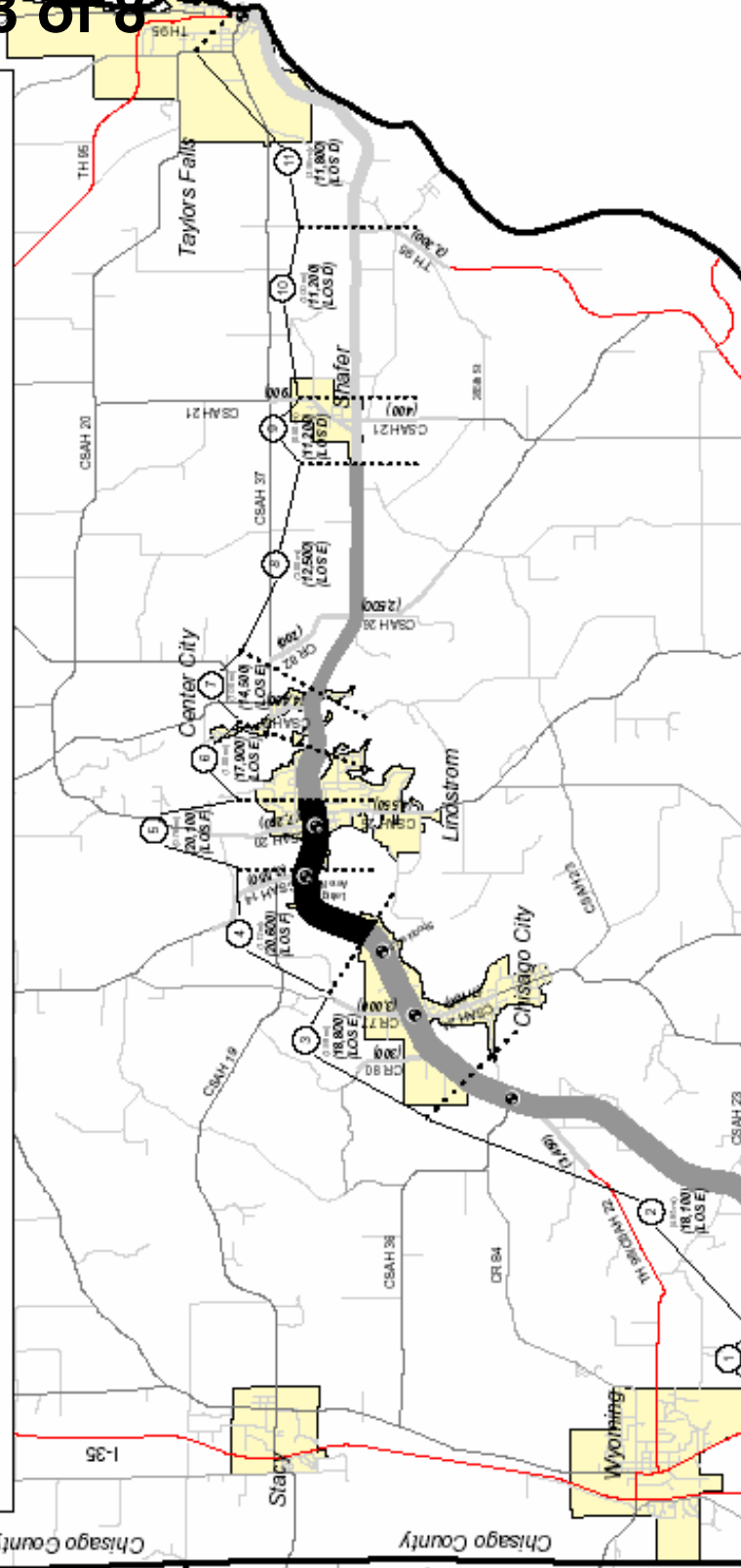


Source: Metropolitan Council

Session 3B - Case Study Maps

8 of 8

Existing Year 2000 Average Daily Traffic (ADT) Volumes and Level of Service (LOS)



Legend

- Signalized Intersections
- Segment Boundaries
- Trunk Highways
- CSAH Highways
- County Roads
- Township Roads
- City Streets
- Municipal Boundaries

ADT Bandwidth

- 18,000 or more vehicles per day
- 15,500 - 18,000 vehicles per day
- 12,000 - 15,500 vehicles per day
- 8,000 - 12,000 vehicles per day
- less than 8,000 vehicles per day

Level of Service (LOS)

- LOS A - D
- LOS E
- LOS F

Source: Minnesota Department of Transportation and BRW, Inc.

